



WAH YAN COLLEGE  
HONG KONG











In 1926, Bishop Henry Valtorta, the newly appointed Vicar Apostolic of Hong Kong, invited the Jesuits to establish a 'high-class secondary school for boys.' Recognising the need for a high-quality educational institution that could cater to the Chinese population, Bishop Valtorta sought English-speaking Irish Jesuits for the mission.

He aimed to create an educational environment that could engage with the influential classes of Hong Kong, hoping that there would emerge an influential section of Chinese who would be Catholic-educated, in line with the Jesuit tradition of engaging with leaders to spread God's word through them.



Wah Yan College, established in 1919 by Mr. Peter Tsui, began its journey as a humble yet ambitious institution aimed at providing quality education with English as the medium of instruction to Chinese boys who were underserved by existing schools.

Starting modestly with just four students, the College quickly expanded, achieving a remarkable milestone in 1922 by becoming the first Grant-in-Aid school founded and managed by a Chinese individual—a testament to our early success and commitment to educational excellence.







In 1932, the College experienced a transformative shift when the Jesuits assumed administration. The Jesuits introduced a comprehensive liberal arts curriculum, setting high academic standards and emphasising moral and spiritual development, elements that have since become foundational to Wah Yan's identity. Even during the Japanese occupation, Wah Yan exemplified perseverance by continuing education while sheltering the displaced.

After the war, the College's relocation to Mount Parish, Wan Chai, in 1955 marked a significant milestone. Throughout the post-war era, Wah Yan expanded its academic and extracurricular options, consistently producing straight-A students and establishing itself as a beacon of excellence. In 1971, the Jesuits assumed responsibility for the Pun U Association Wah Yan Primary School.

Wah Yan's history is a testament to our enduring mission of providing a holistic education that balances academic rigour with spiritual growth and social responsibility, solidifying our status as a leading educational institution in Hong Kong. Throughout our first century, Wah Yan remained committed to nurturing the character and intellect of our students, producing many individuals who excelled in both academic and non-academic areas. This includes a significant number of straight-A students during the HKCEE era, as well as the first full top scorer (5\*\*) in the HKDSE era in 2020.

At present, the College is fully aware of the evolving contexts and needs of our students. The ongoing changes in Hong Kong and the world we witness and envisage are the reason the school management team began the contemplation of the blueprint for the College's development back in 2023. Commencing in March 2024, a comprehensive study for the school's advancement was undertaken, followed by a series of meetings, retreats, and spiritual conversations. On 15 February 2025, three major themes for the advancement of the College were launched during the 105th Anniversary Celebrations. No matter what challenges the future holds, we are committed to our mission, fostering a community that values integrity, service, and a dedication to lifelong learning, ensuring that the legacy of our founders lives on.





*How we make strides*





## *WYHK Mission H<sup>3</sup>*

The School Advancement Plan, a thorough contextual analysis, was first initiated in March 2024. After a year of research, a series of retreats and spiritual conversations with different stakeholders of the school, including the Jesuit Education Board, the IMC, our staff members, etc., a plan summarising their insights, reflections, and feedback was developed, and is ready to be put forward.

Culminating from the contextual analysis, retreats, and spiritual conversations, three major themes, collectively titled Mission H<sup>3</sup>, have been formulated to reflect our tradition while boldly and creatively addressing the modern educational landscape: Heritage (承傳), Hope (希望), and Humanity (華仁), ensuring that we continue to thrive and inspire future generations.





# HERITAGE

*Upholding Our Heritage and  
Being Bold and Creative for the Future*

Our aim is to nurture generations of Catholic-educated leaders and influential members of society, thereby creating a greater impact on society through these leaders and enhancing our service to the community.

As we face a rapidly changing world, we draw on the *Jesuits' core attributes of boldness and creativity*. We adopt a forward-thinking approach that adapts to current needs while ensuring our commitment to the legacies of Jesuit fathers and to the College's fundamental mission.



To ensure our College remains relevant in a dynamic educational landscape, we aspire to adapt to societal and technological changes while continuing to cultivate *a legacy of academic proficiency and human excellence — fostering competence, conscience, compassion, and commitment* among our students. The College will make efforts to cater to students with diverse talents and gifts while ensuring stable enrollment and students' continued excellence.

In summary, we will take bold and creative steps to cultivate strong community partnerships and stakeholder engagement, investing in long-term strategic planning for future generations to sustain our identity in providing quality English-medium Catholic education to boys from diverse backgrounds in our second century, as we always have since our foundation in 1919.

While we acknowledge the ongoing changes in the context and needs of Hong Kong and the world over the past 105 years, we remain committed to staying true to our heritage and upholding *the College's fundamental mission* (初心), which originated from the humble yet ambitious aspirations of Mr. Peter Tsui, the founder of the College in 1919, and the Irish Jesuits, who have cared for the College since 1932 to establish a secondary school that provides *quality education in English for local Chinese boys*.

Inheriting this mission and aligning with the Jesuit tradition of engaging with leaders to spread God's word, we maintain the vision of attracting students from various backgrounds, including, but not limited to, families from the upper class in Hong Kong.

承傳





# HOPE

*Providing Space for our Students' Discernment for Hope*

As we embrace and encourage our students to experience technology, we remain steadfast in upholding our core values. This includes emphasising the importance of moral education amid the growing influence of AI, advocating for the responsible use of science and technology, and nurturing a supportive educational atmosphere. We believe that the human connection provided by teachers—who inspire, mentor, and guide—remains irreplaceable. It is imperative that we preserve the human element in education while cultivating supportive, empathetic teaching environments that prioritise the well-being of the community.

Indeed, we believe that Wah Yan's future in education extends beyond technology. We do not only nurture our students to make meaningful contributions to society; we firmly believe that the intrinsic value of their humanity matters most. Science and technology serve merely as tools for providing students with the opportunities to **discern their aspirations and evolve as individuals, inspiring hope both among them and within the community.**

Flexibility and opportunities for experience, reflection, and discernment ultimately foster an environment where faith, values, and human formation are the fundamental principles. Indeed, human beings must remain at the heart of education. To achieve this, we will maintain an open-minded approach that transcends science, technology, and AI, exploring innovative teaching and learning pedagogies, activity opportunities, platforms, curricula, and modes of operation. This will support our students in their journey to find God, learn to love and live, and ultimately forge a hope-filled future for themselves and the community.

Grounded in our Catholic faith, we recognise the rapid changes and formidable challenges facing society and the world. These include increasing divisions and the swift advancement of technology, particularly Artificial Intelligence (AI), along with its implications for teaching and learning. Rather than succumbing to this turbulence and being discouraged, we are committed to taking bold and creative steps to prepare our students and the community to forge a *hope-filled future*.

Inspired by *Ignatian Spirituality*, we strive to provide our students with *sufficient spaces to experience, reflect, and discern their aspirations*. We will continue to offer diverse opportunities, flexibility, and choices that facilitate rich experiences and reflections, empowering them to pursue *Magis* and exercise their *inner freedom*, which enables them to remain hopeful, to excel, and to pave their unique paths.

希望



# HUMANITY

*Creating Conditions for Humanity Formation*



WYHK Mission H3

We also believe, based on the call for Jesuit humanity and the need to develop “Cura Personalis”, that both students’ and teachers’ well-being should be well taken care of and we should create the conditions that facilitate the formation of humanity. Teacher leadership and professional learning communities are crucial for such school advancement. Thus, our teachers recognise the pressing need for ongoing development and training, and our team is well prepared to transform the school into a “learning organisation”.

To develop humanity in our students, we also consider what they should be equipped with before graduating from the College, and naturally we ought to consider the present and the future in nurturing talents. AI and STEAM are definitely pivotal. We aspire to offer a proactive WYHK-based AI education and strategies for responsible AI use in teaching and learning. We also focus on research to let their inquisitive minds grow to tackle real-world challenges for the betterment of mankind. Indeed, new pedagogies are necessary for us to dovetail with the new changes in this world. We have been putting forward such teaching methodologies, and we want our hardware to complement such a new era of learning and teaching in Wah Yan.



Going back to the core of humanity, it is students’ **character formation** that we care about the most. It is the spaces we provide where the **teacher-student companionship** can be actualised. Of course, our strong belief is **physical fitness and sports development** are integral components that contribute to the holistic growth of young individuals. In hoc signo vinces: our mission is accomplished when our student-athletes can truly conquer themselves and make breakthroughs.

In essence, humanity is the formation and growth of our students, who exemplify virtues and values. It is this humanity that ignites their passion and potential, instilling in them a sense of obligation to become leaders of the future—**Men For And With Others**.



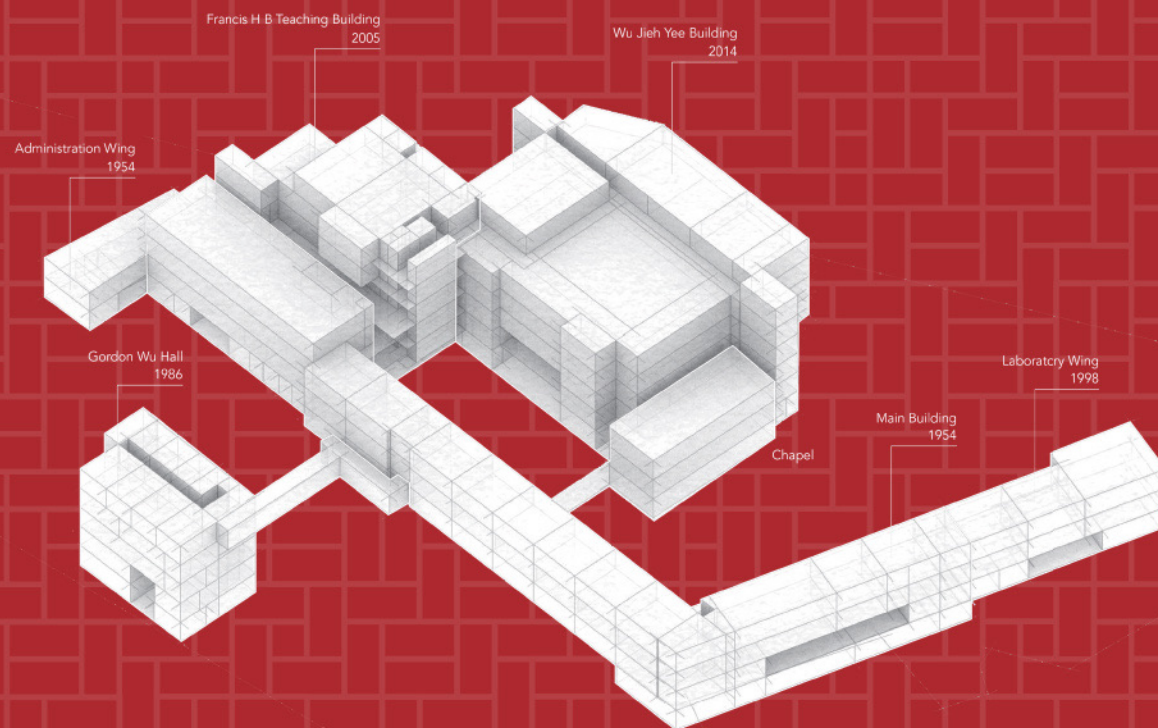
華仁



We are dedicated to applying Jesuit boldness and creativity to uphold and advance the founding mission of Wah Yan, instilling hope in our students amidst a changing world while cultivating and emphasising humanity. In the spirit of Magis, we strive to strengthen Wah Yan's identity by aligning with the College's fundamental mission of providing quality education in English, utilising up-to-date technologies and approaches. Simultaneously, we will remain open to exploring diverse opportunities, platforms, curricula, and modes of operation that support the formation and discernment of our students. Our goal is to blend academic rigour, applied learning, and character development rooted in Jesuit values of excellence, integrity, and service for students from various backgrounds in Hong Kong and beyond.







To reflect our Heritage of boldness and creativity, create space for Hope, and facilitate Humanity formation, our first step towards achieving Mission H<sup>3</sup> is to provide our students with state-of-the-art facilities that foster creativity, collaboration, innovation, and physical well-being; in short, an environment that advances the Jesuit value of "Cura Personalis".

Thanks to the support of the Wah Yan community and the unwavering efforts of Jesuit fathers and our teachers in offering quality education to our students, the Mount Parish campus will have served generations of Wahyanites for 70 years soon. Over the decades, we have implemented significant improvements, such as the School Improvement Project in the early 2000s and the New Hall Complex in 2014. However, the landscape of education is continually evolving. In today's rapidly changing world, advancements in teaching paradigms and technology necessitate a thorough reassessment and enhancement of our physical environments to deliver the best possible learning experience for our students.

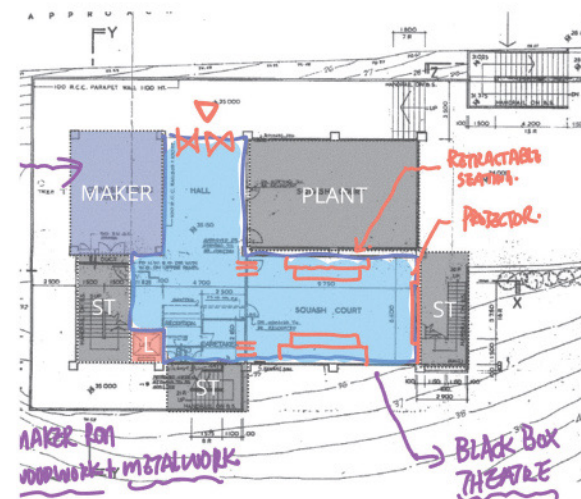
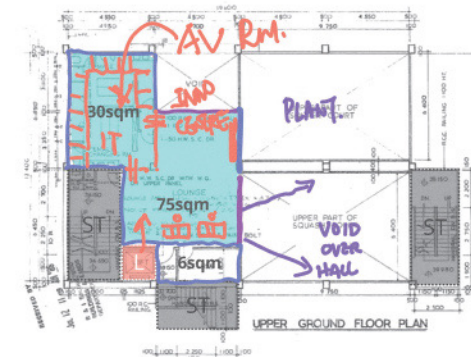




Whatever the mind  
and believe, it can do

## I Innovation Education Centre I

Facility Upgrades Plan



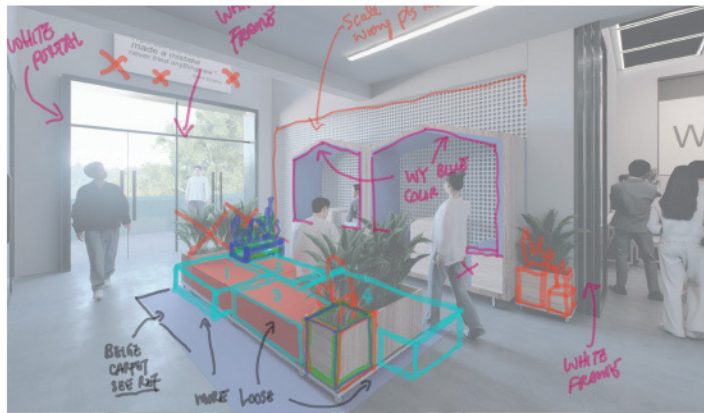
## Innovation Education Centre

| Gordon Wu Hall

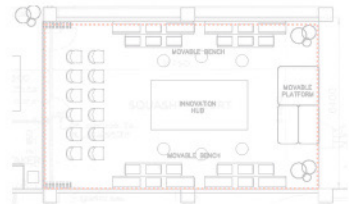
- Introduce Innovation Labs that promote learning with and through advanced technologies, including AI, blockchain, and Web3. These labs will support the development of technology and AI education initiatives, as well as strategies for responsible use of technology and AI in teaching and learning.







Architectural Renderings and Sketches © William So (Class of 1998). All rights reserved.

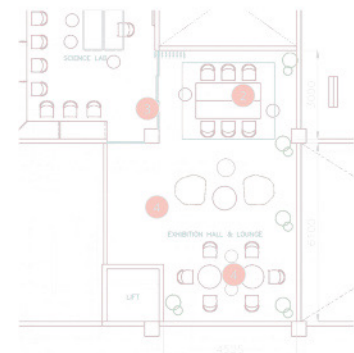


- ✦ Establish an IDEEA (Innovation, Design, Engineering, Entrepreneurship, and Algorithm) Workshop in Gordon Wu Hall to provide innovative, technology-driven, and hands-on learning experiences for students.
- ✦ Convert the Squash Court into an open area for presentations and forums, creating a versatile space for collaboration and knowledge sharing.

## STEAM Research Centre

| Science Labs

- ✦ Upgrade research equipment and facilities in the science labs to support advanced scientific research to address real-world challenges, such as Biotechnology, Space Science, and other scientific disciplines, and promote gifted education in related fields.

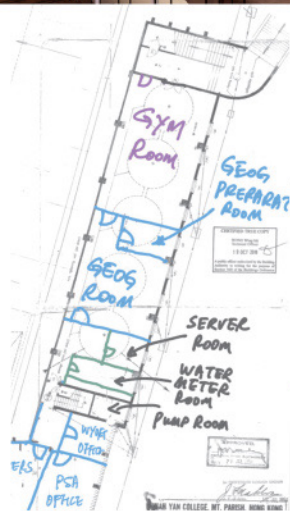
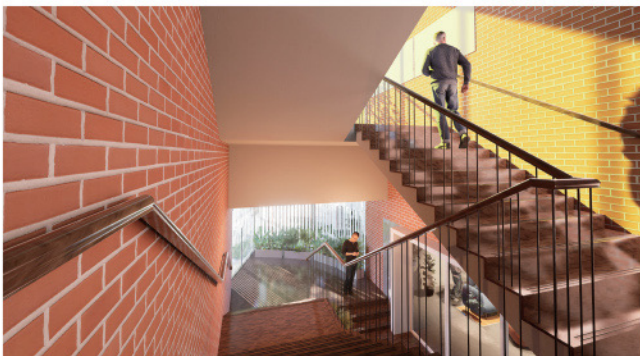
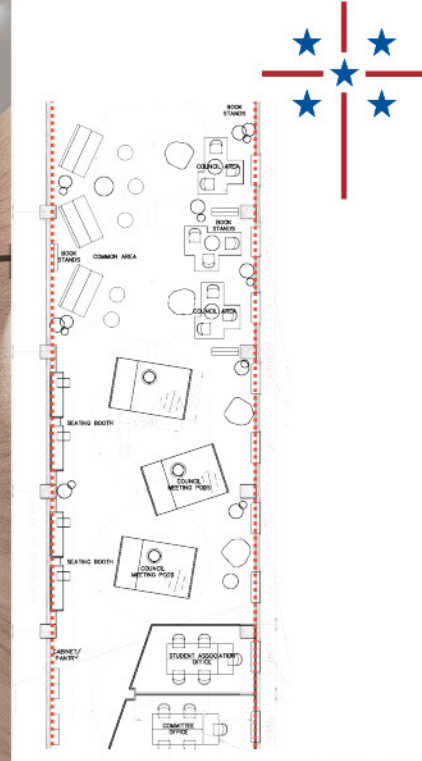




# Student Hub

| Basement of the Lab Wing in the Teaching Block

- ✦ Relocate the current Geography Room and Gym
- ✦ Renovate the basement to accommodate all student-related spaces, including Student Common Area, Student Association Office, Social Workers' Room, Educational Psychologist Room, Counselling Room, Cattery, Centre for Overseas University Counselling, Life Planning and Further Studies Guidance Counselling Office.
- ✦ Relocate the PTA office to the basement.
- ✦ Reorganise and redesign the current PSA office and WYOFF office.







## Classroom Upgrades

| Teaching Block & Gordon Wu Hall

- ✦ Reimagine the 24 classrooms in the teaching block by incorporating interactive learning tools, such as whiteboards, movable desks, chairs, and cutting-edge devices. These enhancements will foster the acquisition of 21st-century skills and promote cooperative learning, aligning with the College's educational goals, particularly in redirecting authority, implementing BYOD, and utilising Project Zero thinking tools.
- ✦ Reorganise and redesign the classrooms in Gordon Wu Hall with flexible partitions to enhance interactive learning through educational technologies and new pedagogies, accommodating various group sizes.

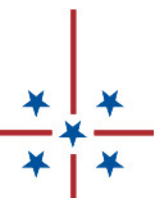


## Sports Centre

| 5/F of Wu Jieh Yee Building

- ✦ Relocate the Gym Room to the SAC to provide more accessible fitness facilities.
- ✦ Transform the Rooftop Garden into an artificial turf futsal court.
- ✦ Furnish the Rooftop Classrooms with fencing equipment.

The above are the spaces where our students can fully develop their humanity under our Ignatian Spirituality. We aim to kick-start the construction in September 2025 as a milestone for the celebration of the 70<sup>th</sup> anniversary of our campus on Queen's Road East. All these facility upgrades are scheduled to be completed by August 2026.



Schools in Hong Kong

ry Schools in Hong Kong

ege, Hong Kong

105<sup>th</sup> Anniversary



